

**Plug-On Combination Type Arc Fault Circuit Breakers, Type BR—10 kAIC, 120 Vac and 120/240 Vac**

**Type BR, 1-Inch (25.4 mm) wide FIRE-GUARD Combination Type AFCI Circuit Breakers**

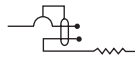
Poles	Ampere Rating	Configuration	Catalog Number
Single-pole 10 kAIC	15	AFCI	<b>BR115CAF</b> ① <b>BRC115CAF</b>
	20	AFCI	<b>BR120CAF</b> ① <b>BRC120CAF</b>
Single-pole 15 kAIC	15	AFCI	<b>BRLH115CAF</b> ①
	22	AFCI	<b>BRLH120CAF</b> ①
Two-pole 10 kAIC	15	AFCI	<b>BR215CAF</b>
	20	AFCI	<b>BR220CAF</b>

**Plug-On Ground Fault Circuit Breakers, Type GFCB and GFEP—10/22 kAIC, 120 Vac and 120/240 Vac**

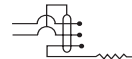
**Type GFCB Single-Pole**



**Type GFCB Ground Fault Circuit Breakers—5 Milliampere—1-Inch (25.4 mm) per Pole 120 Vac or 120/240 Vac, 10 kAIC**



**Single-Pole 120 Vac**  
Requires One  
1-Inch (25.4 mm) Space  
1 per Shelf Carton  
Catalog Number ②



**Two-Pole 120/240 Vac**  
Common Trip Requires Two  
1-Inch (25.4 mm) Spaces  
1 per Shelf Carton  
Catalog Number

**Type GFCB Two-Pole**



Ampere Rating	Wire Size Range Cu/Al 60°C or 75°C	Single-Pole 120 Vac Requires One 1-Inch (25.4 mm) Space 1 per Shelf Carton Catalog Number ②	Two-Pole 120/240 Vac Common Trip Requires Two 1-Inch (25.4 mm) Spaces 1 per Shelf Carton Catalog Number
15	#14–4	<b>GFCB115</b>	<b>GFCB215</b>
20	#14–4	<b>GFCB120</b>	<b>GFCB220</b>
25	#14–4	<b>GFCB125</b>	<b>GFCB225</b>
30	#14–4	<b>GFCB130</b>	<b>GFCB230</b>
40	#14–4	<b>GFCB140</b>	<b>GFCB240</b>
50	#14–4	—	<b>GFCB250</b> ③
60	#14–6	—	<b>GFCB260</b>

**Notes**

- ① Clamshell packaging available with CS modification code on the end of catalog number.
- ② Available with bell alarm or auxiliary switch. See circuit breaker accessories on **Page 81**.
- ③ For use with copper wire only.